

Edmonton transit
Effective Date - Aug. 1/80

Route Index

Route No.	Route Origin	Destination	Frequency of Service						
			Night, Sunday & Holiday Terminus	A.M. Peak	Mid Day	P.M. Peak	Early Eve	Late Eve	Sat. Mid Day
1	Jasper Place	University							
2	Oliver	University							
3	Westmount	University							
4	Westmount	University							
5	142 St. / 118 Ave.	University							
6	Jasper Place	University							
7	142 St. / 118 Ave.	University							
8	142 St. / 118 Ave.	University							
9	142 St. / 118 Ave.	University							
10	142 St. / 118 Ave.	University							
11	142 St. / 118 Ave.	University							
12	142 St. / 118 Ave.	University							
13	Jasper Place	University							
14	Jasper Place	University							
15	Jasper Place	University							
16	Jasper Place	University							
17	Jasper Place	University							
18	Jasper Place	University							
19	Jasper Place	University							
20	Jasper Place	University							
21	Jasper Place	University							
22	Jasper Place	University							
23	Jasper Place	University							
24	Jasper Place	University							
25	Jasper Place	University							
26	Jasper Place	University							
27	Jasper Place	University							
28	Jasper Place	University							
29	Jasper Place	University							
30	Jasper Place	University							
31	Jasper Place	University							
32	Jasper Place	University							
33	Jasper Place	University							
34	Jasper Place	University							
35	Jasper Place	University							
36	Jasper Place	University							
37	Jasper Place	University							
38	Jasper Place	University							
39	Jasper Place	University							
40	Jasper Place	University							
41	Jasper Place	University							
42	Jasper Place	University							
43	Jasper Place	University							
44	Jasper Place	University							
45	Jasper Place	University							
46	Jasper Place	University							
47	Jasper Place	University							
48	Jasper Place	University							
49	Jasper Place	University							
50	Jasper Place	University							
51	Jasper Place	University							
52	Jasper Place	University							
53	Jasper Place	University							
54	Jasper Place	University							

Route No.	Route Origin	Destination	Frequency of Service						
			Night, Sunday & Holiday Terminus	A.M. Peak	Mid Day	P.M. Peak	Early Eve	Late Eve	Sat. Mid Day
55	Jasper Place	University							
56	Jasper Place	University							
57	Jasper Place	University							
58	Jasper Place	University							
59	Jasper Place	University							
60	Jasper Place	University							
61	Jasper Place	University							
62	Jasper Place	University							
63	Jasper Place	University							
64	Jasper Place	University							
65	Jasper Place	University							
66	Jasper Place	University							
67	Jasper Place	University							
68	Jasper Place	University							
69	Jasper Place	University							
70	Jasper Place	University							
71	Jasper Place	University							
72	Jasper Place	University							
73	Jasper Place	University							
74	Jasper Place	University							
75	Jasper Place	University							
76	Jasper Place	University							
77	Jasper Place	University							
78	Jasper Place	University							
79	Jasper Place	University							
80	Jasper Place	University							
81	Jasper Place	University							
82	Jasper Place	University							
83	Jasper Place	University							
84	Jasper Place	University							
85	Jasper Place	University							
86	Jasper Place	University							
87	Jasper Place	University							
88	Jasper Place	University							
89	Jasper Place	University							
90	Jasper Place	University							
91	Jasper Place	University							
92	Jasper Place	University							
93	Jasper Place	University							
94	Jasper Place	University							
95	Jasper Place	University							
96	Jasper Place	University							
97	Jasper Place	University							
98	Jasper Place	University							
99	Jasper Place	University							
100	Jasper Place	University							

▲ DENOTES: ROUTE OR FREQUENCY CHANGE EFFECTIVE AUG. 31/80.
 ★ DENOTES NO DIRECT SERVICE TO CAMPUS, LAND, COLISEUM, DOWNTOWN, GOVERNMENT CENTRE, SOUTHGATE, OR VALLEY.
 ● DENOTES: EXTRA BUSES DURING PEAK HOURS.
 NOTE: ROUTES 77, 78, 100 OPERATE ONLY WHEN UNIVERSITY IS IN SESSION.

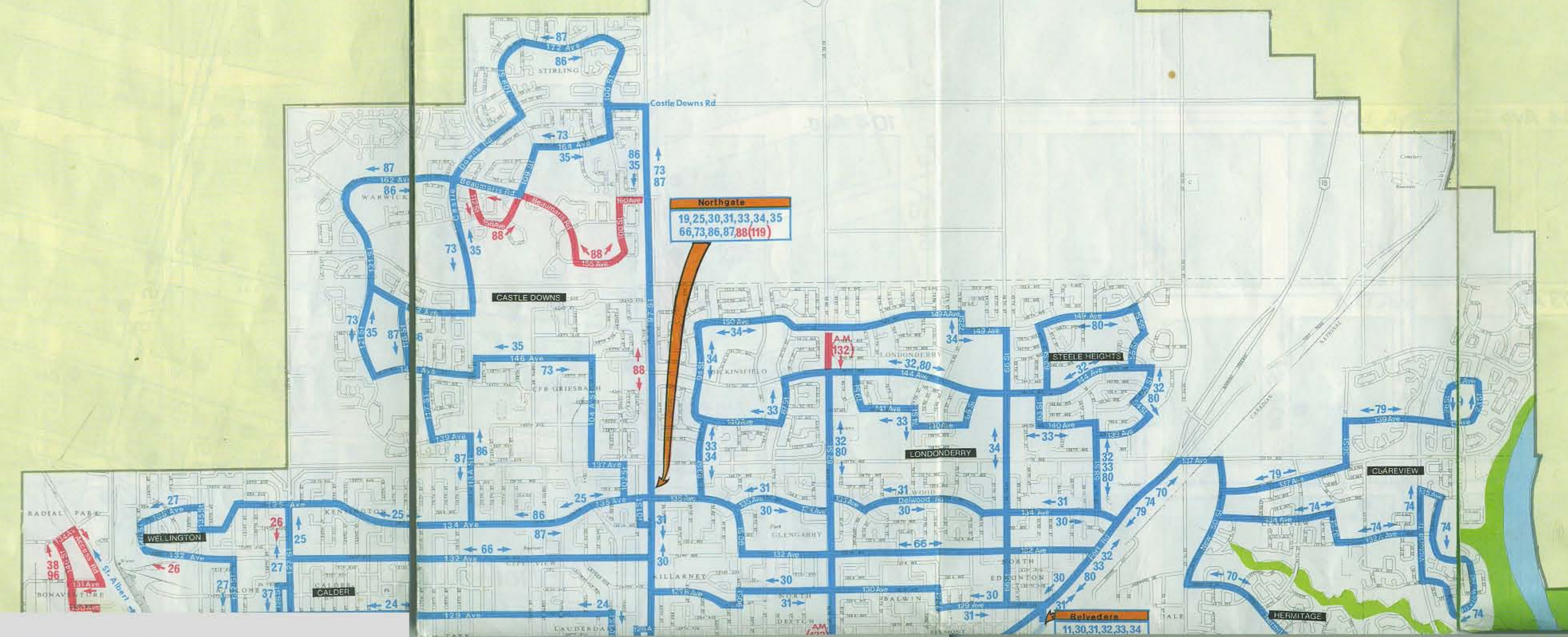
LEGEND

- Basic Service
- Peak Hour Service
- Major Transfer Point
- Light Rail Transit
- Hospital
- Downtown Area (see reverse)
- Point of Interest

(132) Effective August 31, 1980

Day Map

This map illustrates Regular Weekdays and Peak Hour transit service.



Night, Sunday and Holiday Map

Legend

Night, Sunday and Holiday Service**

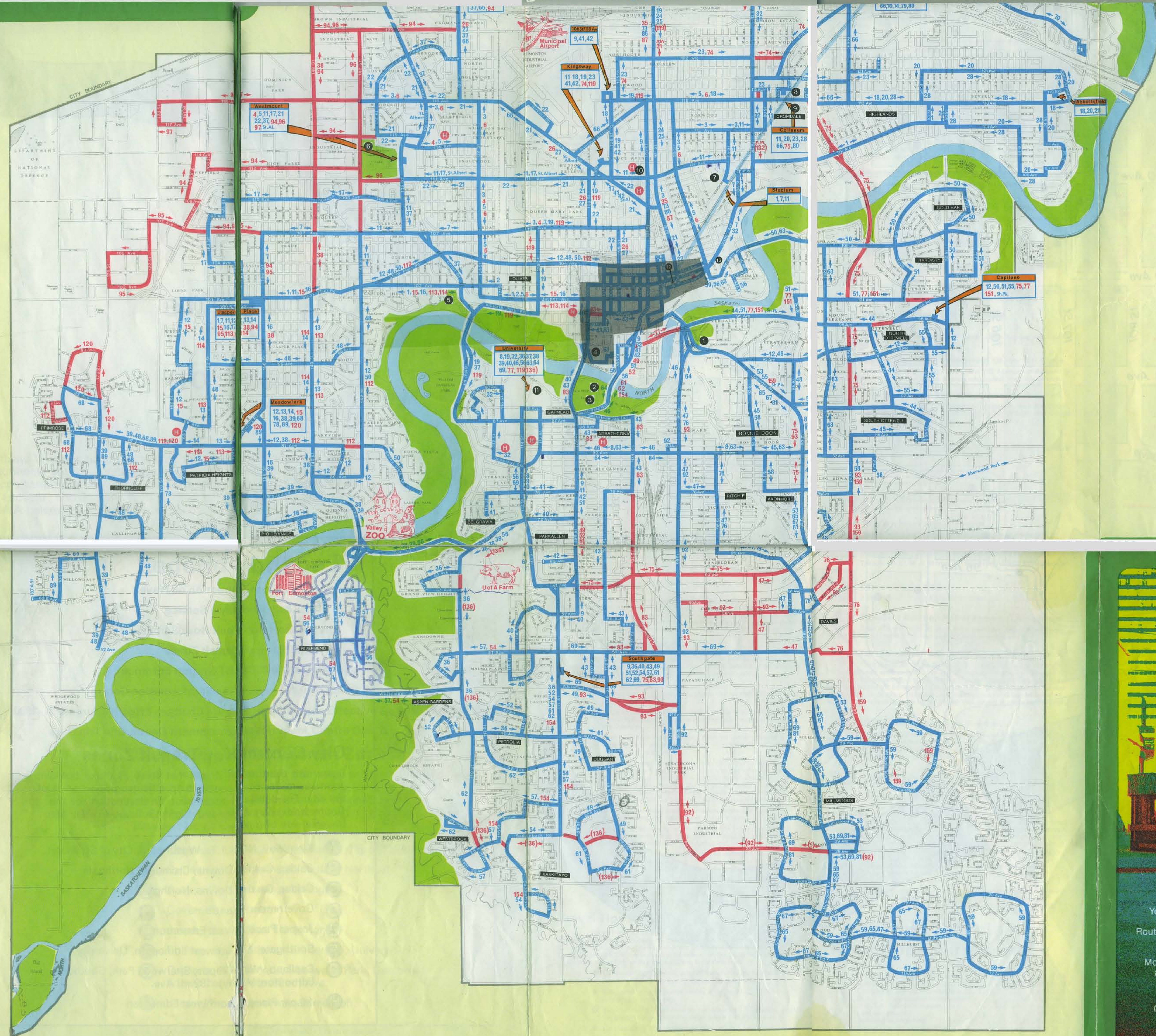
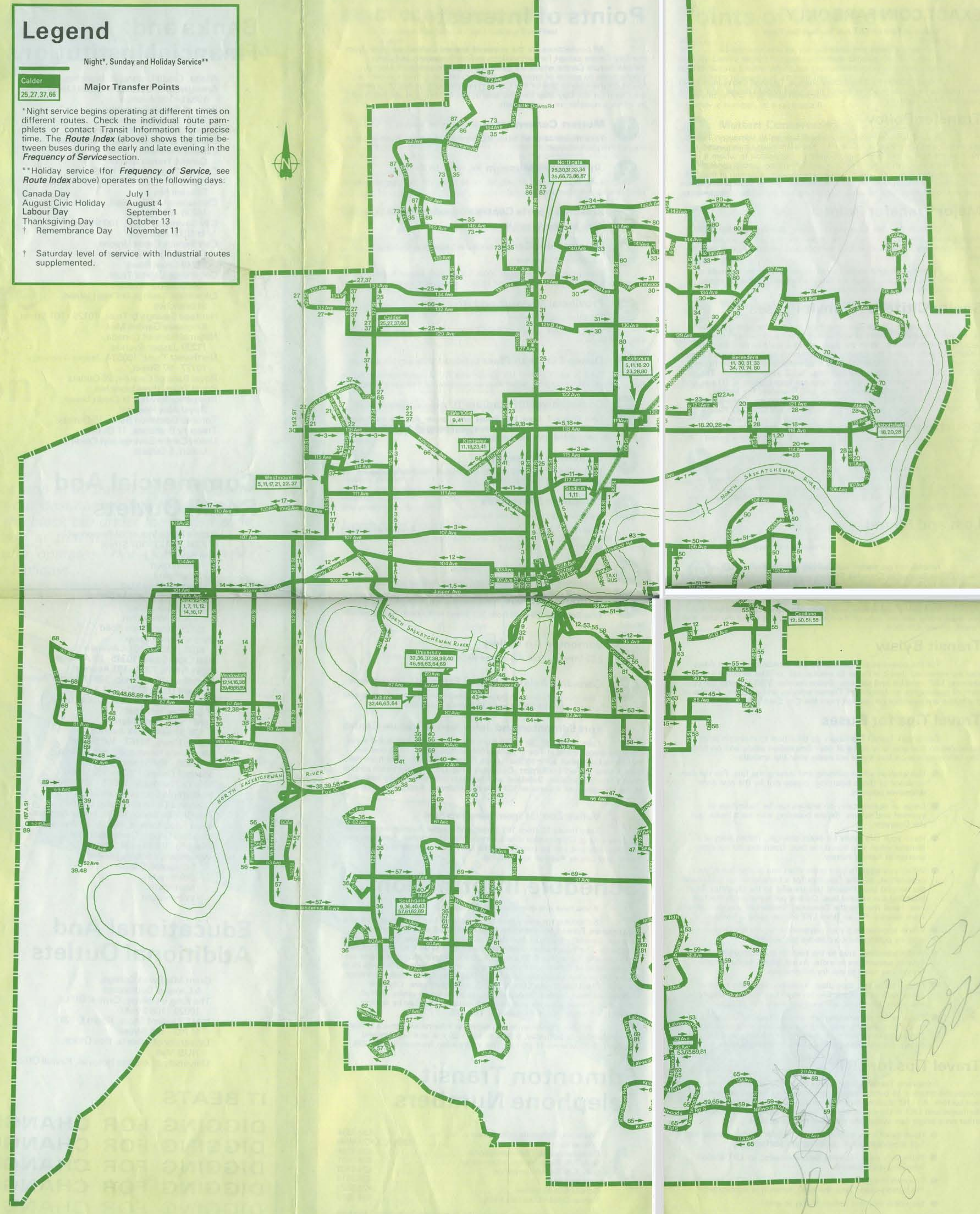
Major Transfer Points

**Night service begins operating at different times on different routes. Check the individual route pamphlets or contact Transit Information for precise times. The Route Index (above) shows the time between buses during the early and late evening in the Frequency of Service section.

**Holiday service (for Frequency of Service, see Route Index above) operates on the following days:

Canada Day	July 1
August Civic Holiday	August 4
Labour Day	September 1
Thanksgiving Day	October 13
Remembrance Day	November 11

* Saturday level of service with Industrial routes supplemented.



Visit Edmonton Transit's Downtown Information Centre, Jasper Avenue and 100A Street. Your questions will be answered by our trained information staff. Route pamphlets, and other printed materials are also available.

The Information Centre is open Monday to Friday, 7:00 a.m. to 6:00 p.m., and Saturday, 9:30 a.m. to 5:30 p.m.

Don't forget Transit Information is only a telephone call away. Our information number is 432-1234.

Edmonton



City Centre Transit Circulation Map

Buses in the City Centre do not stop at all transit zones. If unsure of the closest transit zone to your destination, ask the Operator. When boarding buses, check the black tab under the transit zone sign; it lists the buses that stop at that transit zone, the bus's destination and when the route operates. (For example: A.M. Peak, or no Nights, Sundays or Holidays.)

Legend

- Direction of Travel
 - Basic Service
 - Peak Hour Service
 - Transit Zones
 - LRT Station Entrance
 - Transit Information Centre
 - Route Changes Effective August 31, 1980
 - Government Centre One Trip Only
- ### City Centre Key Transit Zones
- Below are the transit Zones that serve as major boarding points from the city centre to specific geographic areas of the city. For detailed information on destination see the Route Index, Day Map and Night, Sunday, Holiday Map (reverse side of guide.)
- A** Kingsway, N.A.I.T., Westmount, City of St. Albert
 - B** Calder, Castle Downs, Cromdale, Northgate
 - C** Calder, Castle Downs, Northgate
 - D** Government Centre
 - E** Jasper Place, West Edmonton
 - F** Southgate, Southwest Edmonton, University
 - G** Capilano, Mill Woods, Sherwood Park, Southeast Edmonton, Whyte (82nd) Ave.
 - H** Jasper Place, Northwest Edmonton

Services Subject to Change Without Notice

Using the Guide

Edmonton Transit's services are subject to continuous review; details in the Transit Guide are subject to alteration. Every effort is made to keep information up-to-date and details of changes are advertised in newspapers, and current individual route pamphlets are available. While every effort will be made to keep to the timetables and route descriptions, Edmonton Transit will not be responsible for any delays, damage or inconvenience caused by any operating failure as a consequence of any inaccuracies in this Transit Guide. This is the Summer, 1980 Transit Guide. Comments and suggestions should be forwarded to:

Edmonton Transit
Marketing and Development
10426-81 Avenue
Edmonton, Alberta
T6E 1A5

Day Map

All regularly scheduled bus routes and Light Rail Transit (LRT) operated by Edmonton Transit are displayed on the Day Map. Colour-coded routes on the Day Map give the following information:

- Blue - Basic service. These routes run all day, from early in the morning for exact times check individual route brochures or contact Information, 432-1234 to early evening (check the Night, Sunday, Holiday Map to see which routes operate in the evenings).
- Red - Peak hour service. These routes run in the morning and evening rush hours only (for exact times, check individual route brochures or contact Information, 432-1234).

Route Index

The Route Index (reverse side of Guide) shows all routes in numerical sequence. The Frequency of Service section indicates when a route operates during different times of the day. The notes, found at the end of the Route Index, list special information affecting certain routes. The Route Origin section indicates the destination sign found on the upper front of the bus.

The destination sign system used by Edmonton Transit consists of a route number and destination. The destination, shown on the front of the bus, corresponds to the destinations listed in the Route Index (reverse side of Guide). More specific destination information, or other service information, when required, is found on a window card by the front door of the bus.

Detailed schedules that give times and route origins are available at various locations (see Schedule Information) or by calling Information, 432-1234.

Night, Sunday, Holiday Map

The Night, Sunday, Holiday Map (reverse side of Guide) displays the routes that operate evenings, Sundays and statutory holidays (the holidays are listed in the map's index).

City Centre Circulation Map

The City Centre Map (to the left of this section) gives a detailed view of bus movements in the City Centre.

Ride Information

How Much Does It Cost - 1980 Fare Structure

EXACT COIN FARE ONLY	
Common Fare on LRT and Surface Bus Fleet	50¢
Adult	50¢
Children (15 years and under)	25¢
Children (6 years and under)	Free
Adult Monthly Transit Pass	\$18.00

Transit operators do not carry change. To avoid delays have exact fare ready before boarding. For transit pass sales outlets please refer to the panel on the far right.

Transfer Policy

A valid transfer is accepted as full fare on all Edmonton Transit bus routes and Light Rail Transit (LRT). Transfers must be requested at the time the fare is paid and must be used by the person to whom it is issued. A transfer can be used to take any Edmonton Transit service within one hour of issue. This allows for return trips, stopping in the middle of a trip without having to pay an extra fare, and to provide single fare payment for connections between two points not served by a single route.

Major Transfer Points

On both the Day Map and the Night, Sunday, Holiday Map, major transfer points are shown. The largest transfer points are located at the University of Alberta, all LRT stations and most large shopping centres.

From the major transfer points, connections can be made to many parts of Edmonton. Buses are timed to make transfers at these points, avoiding long waits for riders.

Senior Citizens' Transit Passes

The Senior Citizen Courtesy Pass is a lifetime pass available to Edmonton residents 65 years of age or over, their spouses and spouses of deceased senior citizens. With the pass, all rides are free on Edmonton Transit, St. Albert, and County of Strathcona systems. Senior Citizen Courtesy Passes are available for a \$5.00 administration fee from Room 307, Imperial Bank of Commerce Building, 10102 Jasper Avenue. The office hours for obtaining a Courtesy Pass are from 8:30 to 10:00 a.m. and 1:15 to 4:30 p.m., Tuesday, Wednesday, and Thursday. For further information, call 424-1617 during the above office hours. There is no restriction on the hours of use for the Senior Citizen Courtesy Pass.

Courtesy Seating

As a service to senior citizens and other patrons who may have mobility problems the front bench seat and first forward facing seat in each of our buses has been designated for use by these individuals. Edmonton Transit looks forward to cooperation from all patrons respecting this courtesy seating policy.

Lost and Found

Articles left on transit vehicles are turned over to the Lost and Found Office located in Churchill Station - use the station entrance at 99 Street and 102 Avenue, concourse level. The Lost and Found is open weekdays 8:30 a.m. to 4:30 p.m. and 2:15 p.m. to 4:30 p.m. on weekends.

To claim a lost article, you must know the route number that you were riding and the date of the loss. For inquiries about the Lost and Found, phone 428-3814.

Transit Bylaw

For the convenience and comfort of Edmonton Transit riders, you are reminded that it is illegal to smoke, eat, or litter in buses and bus shelters. LRT vehicles and stations. Bylaw number 5953 governs the conduct of passengers on Edmonton Transit vehicles and property. Copies of the bylaw are available on request from the City Clerk's Office.

Travel Tips for Buses

- Edmonton Transit Operators do their best to maintain strict schedules so that you may arrive at your destination safely and on time. The following tips on bus travel will make your trip smoother:
 - Use caution when entering and leaving the bus. For the convenience of those boarding, please exit by the rear door whenever possible.
 - Large or clumsy carry on articles can be hazardous to yourself and others. Before boarding with such items, ask the Operator.
 - Have your fare ready (in exact change), transit pass or a transfer when you board the bus. Operators do not carry change or handle money.
 - When you need to take more than one bus to reach your destination, ask the Operator for a transfer when you board the second bus. Present this transfer to the Operator when boarding the second bus. Do not put transfers in the fare box; hand them to the Operator. Remember you can transfer from bus to LRT, or from LRT to bus using a transfer.
 - When approaching your destination, signal the Operator to stop by pulling the cord above the window.
 - When boarding, step to the back of the bus to permit free flow of passengers to exits. Avoid talking to the Operator unless you need to ask for information.
 - Noisy radios and tape players can be disturbing to other passengers and distracting for the Operator. Use earphones and enjoy the music while others enjoy the silence.
 - Observe the no-smoking rule when riding the bus or LRT, waiting in shelters, and LRT stations and platforms. Be courteous to others by not eating or drinking, and by not littering. Do not board animals except seeing eye dogs.

Travel Tips for LRT

- Edmonton Transit's Northeast Light Rail Transit (LRT) line is a successful addition to public transportation services. It complements the bus system. All LRT stations have direct connections to buses. The fare for buses and LRT is the same and transfers can be made from one to the other on a single fare within the transfers hour time limit.
 - Have exact fare, transit pass or transfer ready to show the fare attendant before entering the platform area.
 - Extinguish your cigarette before entering an LRT station. Smoking is prohibited.
 - To open the door to enter or exit from an LRT vehicle, press the button found near the floor, when it is illuminated.
 - Let riders exit first before trying to enter.
 - When you need to transfer from LRT to a bus to reach your destination, get your transfer when you pay your fare from the automated machine at the entrance.

LRT Stations

Edmonton Transit has two park and ride lots where patrons may park their cars and ride LRT for the regular fare of 50¢. There are no plug-ins. The lot locations are as follows:

Belvedere Station 129 Avenue and 61 Street
Stadium Station Stadium Road and 94 Street

Kiss and Ride

There is a passenger drop off and pick-up point called a Kiss and Ride Zone, at Belvedere Station. It is located just west of Belvedere Station. The Kiss and Ride Zone is a five-minute waiting area. Please clear the area as soon as possible.

Special Services

Disabled Adult Transportation System (D.A.T.S.)

D.A.T.S. provides public transportation to disabled individuals, 16 years of age and over, who are unable to use existing transit facilities and who register with the service. The service is provided door-to-door transportation using specially equipped vehicles. Priority is given to those who use D.A.T.S. for work, education and rehabilitation trips. To register call Edmonton Transit, 428-5522. For transportation service and information call 424-8103.

Park and Ride, Shuttle Service

Edmonton Transit operates Park and Ride Shuttle Service for major events with advance ticket sales of over 16,000. Frequent service from several convenient locations begins 1½ hours before and immediately after each event.

Park and Ride and Shuttle services now operate for all Edmonton Eskimo football games at Commonwealth Stadium. Other events receive Park and Ride and Shuttle Service as they meet the above guidelines. The public is notified of the location of parking lots and operating times through advertisements or by calling Information, 432-1234.

Charters

Buses may be chartered from Edmonton Transit at reasonable rates for trips anywhere within a 40-kilometer radius of the City of Edmonton limits. Charter service is available for sports events, sightseeing, conventions and group travel. A public address system can be provided at no extra charge. Buses seat 50 passengers. For information call 428-5522 or 428-5500 weekdays during regular business hours.

Regional Service

The City of St. Albert and the County of Strathcona operate bus systems that connect to Edmonton Transit services. Connecting service is shown on the Day Map, reverse side of the Guide.

St. Albert transit passes are accepted on St. Albert buses only. St. Albert passes may be used to obtain a transfer to an Edmonton Transit bus only when the trip originates on a St. Albert bus. Edmonton transit passes are not valid to and from St. Albert.

part fare on trips to Sherwood Park but not for trips from Sherwood Park to Edmonton.

Information for both regional carriers is available by calling Edmonton Transit's information number, 432-1234. City of St. Albert Engineering Department, 459-6601, or County of Strathcona Transportation Department, 464-7433.

Points of Interest

All connections for the points of interest (below) are given from the City Centre except for connections to Edmonton Transit and John Janzen Nature Centre which are given from the University of Alberta. Connections to points of interest in Edmonton can be found on the reverse side of the Guide. The following points of interest are found on the Day Map (reverse side of the Guide), and are indicated by either a number or a pictograph.

- 1** Muttart Conservatory 96 Street/96 Avenue
Take Route 44 or 51 from 100 Street and Jasper Avenue southbound. Frequent service.
- 2** John Walter Museum 106 Street/93 Avenue
Take Route 9, 32, 41, 42, 56, or 64 from 101 St./Jasper Avenue southbound. Frequent service.
- 3** Kinsmen Sports Centre 107 Street/90 Avenue
Same as John Walter Museum.
- 4** Government Centre (includes Legislative Building) 108 Street/97 Avenue
Take route 40 or 63 from 100A Street and Jasper Avenue westbound, or Route 43 from 99 Street and 102A Avenue westbound.
- 5** Provincial Museum and Archives 129 Street/102 Avenue
Take Route 1 from 101 Street and Jasper Avenue westbound. Frequent service.
- 6** Queen Elizabeth Planetarium 138 Street/111 Avenue
Take Route 17 from 101 Street and 102 Avenue northbound or Route 5 from 101 Street and Jasper Avenue westbound. Frequent service.
- 7** Commonwealth Stadium 112 Avenue/Stadium Road
Take Route 1 from 101 Street and Jasper Avenue eastbound, Route 7 from 101 Street and 102 Avenue eastbound, or Light Rail Transit (LRT) from Central and Churchill stations.
- 8** Edmonton Coliseum
Take route 5 from 101 Street and Jasper Avenue eastbound, or the LRT from Central or Churchill Station.
- 9** Edmonton Northlands (Exhibition Grounds, Horse Racing)
Take Route 17 or 5 from 101 Street and Jasper Avenue eastbound or Light Rail Transit (LRT) from Central and Churchill stations. Board Route 3 at 101 Street/102 Avenue eastbound.
- 10** City Archives 10105 - 112 Avenue
Take Route 9 from 101 Street and Jasper Avenue northbound.
- 11** Saskatchewan Museum 11133 Saskatchewan Drive
Take Route 32, 56 or 64 from 101 Street and Jasper Avenue southbound.
- 12** Edmonton Art Gallery 2 Sir Winston Churchill Square 99 Street, 102 A Avenue.
- 13** Canada's Aviation Hall of Fame 9111 Jasper Avenue
Take Route 1, 5 or 32 from 101 Street and Jasper Avenue eastbound or Route 7 from 101 Street and 102 Avenue eastbound.

Fort Edmonton and John Janzen Nature Centre

Take Route 38, 39, or 56 from the University. Follow the signs from the transit zone at Fox Drive and Westminster Creek. Walk one-half mile from the transit zone to the Nature Centre. Walk one mile from the transit zone to Fort Edmonton. Discovery Ring 123 provides direct service during May to October, Sundays, and holidays only and can be boarded at the University of Alberta or 107 Street and Jasper Avenue southbound.

Valley Zoo 134 Street/Buena Vista Road

Take Route 50 from 101 Street and Jasper Avenue westbound. Discovery Ring 123 provides direct service May to October, Sundays and Street and Jasper Avenue southbound.

Schedule Information

If you have any questions, let us help you.

Schedules for every route are available free of charge from the Downtown Transit Information Centre, 100A Street and Jasper Avenue. Specially trained information people are available to answer your questions. The information centre is open 7:30 a.m. to 6:00 p.m. Monday to Friday and Saturdays 9:30 a.m. to 5:30 p.m. Information pamphlets are also available at Edmonton Public Libraries, the University of Alberta HUB Ticket Office, the University of Alberta SUB information desk, all Visitor bureaus, Grant MacEwan Community College campuses, City Hall information desk, various shopping centre information desks, and all Edmonton Transit garages and administration building, or by writing Edmonton Transit, 10426 81 Avenue, T6E 1A5.

For your convenience, a telephone information service is maintained Monday to Saturday, 6:30 a.m. to 11:00 p.m. and Sunday and Holidays, 8:00 a.m. to 11:00 p.m. The information number is 432-1234.

Edmonton Transit Telephone Numbers

Route and Schedule Information	432-1234
Charters	428-5522, 428-5500
Complainers and Complimentations	428-5504
D.A.T.S. Registration Information	428-5591
D.A.T.S. Ride Information	428-8103
Lost and Found	428-3814
School Bus Enquiries	428-5523
Senior Citizen Courtesy Pass	424-1617

For other departments refer to the Edmonton Telephone directory white pages, under City of Edmonton, Transit, or call the recipient, 428-5648.

BUY A HANDY MONTHLY TRANSIT PASS

Edmonton Transit

Carry Our Pass and We'll Carry You

Use an adult Monthly Transit Pass for convenience and economy. Just \$18.00 buys you all the Transit rides you want on buses and LRT trains for a full month. Passes are available by the 20th of the preceding month at more than 150 outlets. People who contributed to development of Edmonton and the province, and the events that surrounded the individual are depicted on each of the 12 monthly passes for 1980.

School Passes

School passes are available during the school year for elementary and secondary students. These passes can be purchased only from the school the student attends.

Student Pak

Student Pak, available for post-secondary students only, offers a special fare reduction on a package of four regular monthly transit passes for sale in December, April and August for \$65.00. Just bring your student I.D. card or course registration form to one of the following locations:

- University of Alberta, Students Union Box Office, HUB Mall
- N.A.I.T., Student Store, Room E-126 11762 - 106 Street
- Amalgamated Savings & Credit Union, 10621 - 100 Avenue
- Alberta College General Office, 10411-101 Street
- The King's College Central Office, 10020 - 108 Street
- Edmonton Transit Administration Building, 10426 - 81 Avenue.

Banks and Financial Institutions

- Allalta, Credit Unions, all branches
Amalgamated Savings & Credit Union, 10621 - 100 Avenue
Bank of British Columbia, 10661 Jasper Avenue
Bank of Montreal, four branches
Belmont Credit Unions, all branches
Canada Permanent Trust, Central Transit Station
Canada Trust, 10150 - 100 Street
Canadian Imperial Bank of Commerce, 56 branches
Chinatown Credit Union, 10236 - 97 Street
City Savings & Trust, 100 Street & 101A Avenue
Civil Service Credit Unions, 17th, 8215 - 112 Street
11749 Groat Road
Commerce Capital Trust, 10420 Jasper Avenue
Edmonton Savings & Credit Union, all branches
Heritage Savings & Trust, 10126 - 101 Street
Kingsway Garden Mall
National Bank of Canada, 11239 Jasper Avenue
Northwest Trust, 10053A Jasper Avenue, 10277 - 97 Street
Royal Bank of Canada, 26 Outlets
Royal Trust, three branches
Royal City Savings & Credit Union, Royal Alex Hospital
Toronto Dominion Bank, 15 Outlets
Treasury Branches, 11 Outlets
Union Centre Savings and Credit Union, 5 Outlets

Commercial And Retail Outlets

- Action Force Industrial Personnel, #204, 10123 - 107 Street
The Bay
- Downtown
- Southgate
Londonderry Mall
- Lower Level Smoke Shop
10065 Jasper Avenue
Eaton's, Downtown
Edmonton West Den, 15126 Stony Plain Road
Harro's Smoke Shop, #130, 10020 - 101A Avenue
Hub Cigar Store, 10345 - 82 Avenue
Indon News, 7209 - 101 Avenue
Klondike Smoke Shop, 10617 Jasper Avenue
Leonard Drug, 6121 - 101 Avenue
Customer Service Desk, Upper Level, Londonderry Mall
Lord Byron Food Market, 119 Street & 43A Avenue
Mike's News, 10163 - 101 Street
Mr. Mike's News and Smoke Shop, 10335 - 124 Street
Mitchell Drugs, 11826 - 103 Street
Myro's Pharmacy, 10646 - 101 Street
Paralympic Sports Association, Bonnie Doon Shopping Centre
Pro-Smoke Shop, 10830 Jasper Avenue
Tops Food Market, 10768 - 82 Avenue
Western Drugs, Centennial Mall West 10, 10619 - 124 Street
Woodward's Stores Limited
- Edmonton Centre
- Southgate
- Northgate
- Westmount

Educational And Additional Outlets

- Grant MacEwan College, 5 Campus Bookstores
The King's College, Central Office 10020 - 108 Street
NAIT Student Store, Room E-126 11762 - 106 Street
University of Alberta, Box Office, HUB Mall
University of Alberta Hospital, Payroll Office

IT BEATS DIGGING FOR CHANGE

DIGGING FOR CHANGE
DIGGING FOR CHANGE
DIGGING FOR CHANGE
DIGGING FOR CHANGE